



The Forum for Youth Investment

What is Collective Impact? Why Does it Matter for Youth-Led Prevention Initiatives?


Karen Pittman, President & CEO | The Forum for Youth Investment

The Ohio Youth-Led Prevention Network Adult Leader Summit

December 5, 2014

DURING THE 1950'S, AS SMALLER AND MORE PREMATURE BABIES WERE SAVED WITH INCREASINGLY TECHNOLOGICAL TREATMENTS AND THE INTENSIVE CARE OF THESE INFANTS EXPANDED ACROSS THE COUNTRY, SEVERAL PROBLEMS SURFACED. OXYGEN...SAVED MANY LIVES. HOWEVER, ITS UNREGULATED USE ...APPEARED TO BE DETRIMENTAL TO SOME BABIES...

1952

Two newborn babies are shown in the image. The baby on the left is wearing a blue and white striped hat and a white hospital gown, lying down with its mouth slightly open. The baby on the right is wearing a white hospital gown and is being held by a person's hand, with its head resting against the person's chest.

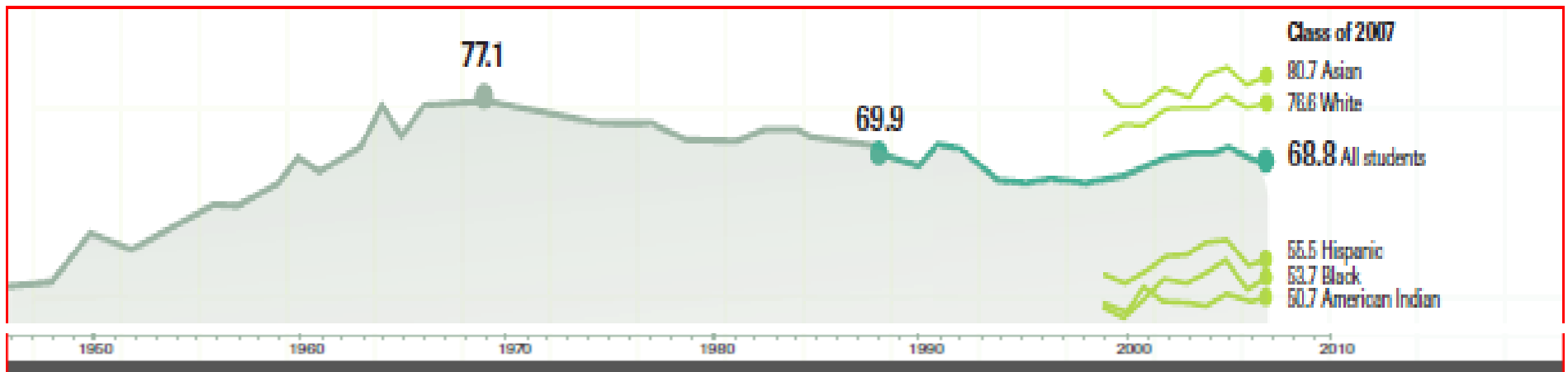
Thaddeus' Daughters

2012

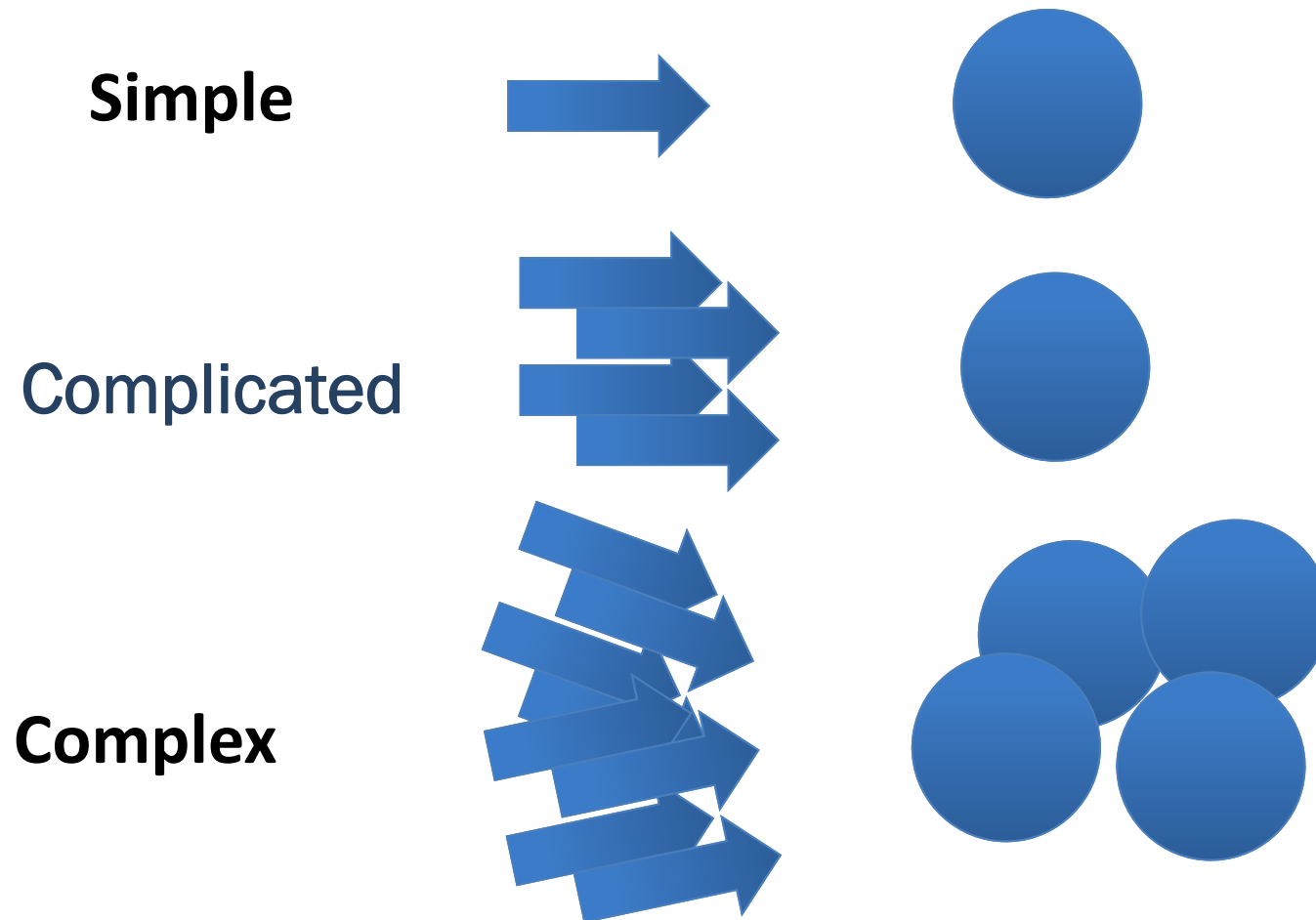
“Recent History Shows Setback”

Education Week, 2010

The U.S. graduation rate reached its historical high point at the end of the 1960s, with the graduation rate peaking at 77 percent in 1969.



Why are some problems easier to tackle than others?



Collective Impact

Collective Impact is the commitment of a group of important actors from different sectors to a common agenda for solving a specific social problem at scale.

Source: Channeling Change: Making Collective Impact Work, 2012

FSG.ORG

Sounds good!

Why haven't we done this?

Leadership Groups

Neighborhood Councils

Youth Network

Workforce Investment
Board

P-20 Council

College Access Network

Substance Abuse
Coalition

Mayor's Office on
Children, Youth, Families

Afterschool Alliance

Health and Wellness
Coalition

Family, School & Community Supports

Increase after-school
participation

Improve OST program
quality

Expand learning
opportunities

**FRAGMENTED
LEADERSHIP**

Increase child health
coverage

Reduce child welfare
caseloads

Expand early childhood
education

Child and Youth Outcomes

Increase School Readiness

Reduce Youth Violence

Improve Third Grade Reading

Reduce Abuse & Neglect

Reduce Obesity

Reduce Bullying

Increase On-Time Graduation

Improve Job Skills

Increase Civic Engagement

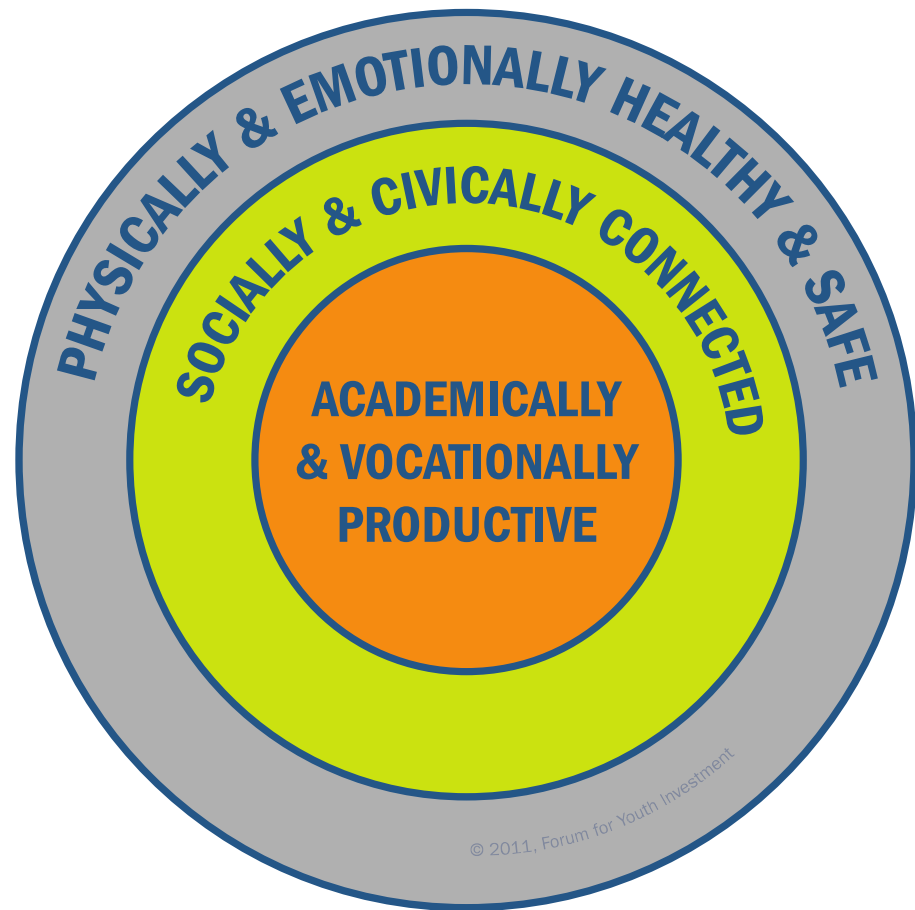
Reduce Substance Use

Decrease Youth Idleness

Take Aim: Ready Children & Youth



Problems co-vary.
Young people need to avoid risks and
build competencies across multiple
areas.

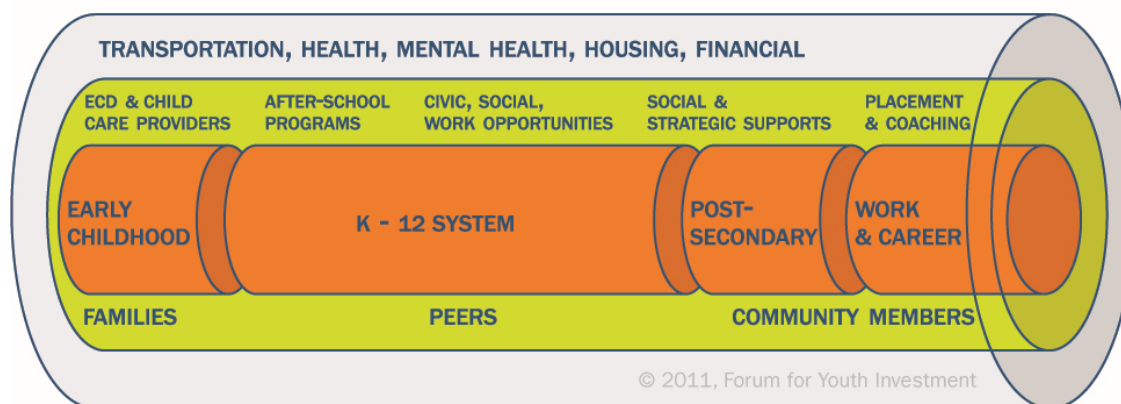


Ready Communities: Insulate the Education Pipeline



Supports (or risks) are everywhere.

Young people need access to quality supports and services in all of the places where they spend time.

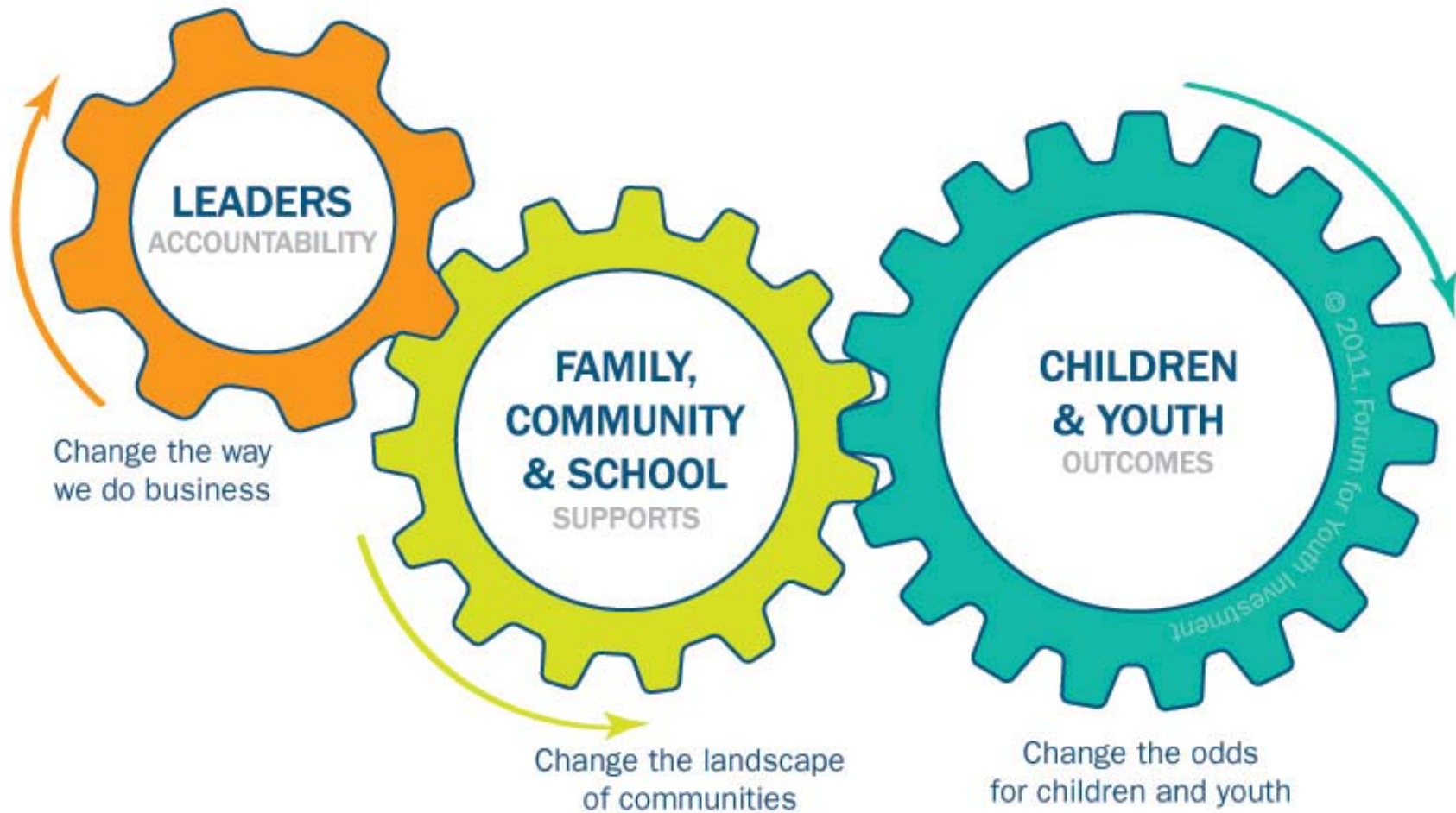


“Cradle to career” insulation (0-26)

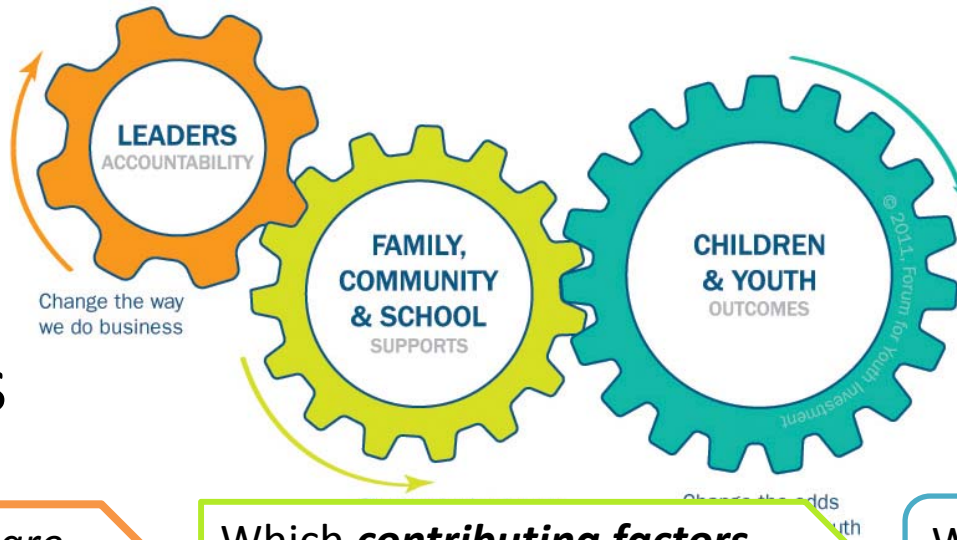
Ready by 21 focuses on the small gear

challenging leaders to think differently & act differently...

Moving the small gear makes a **BIG** difference



Describe
your
initiatives



Which **strategies** are
you using?

Which **contributing factors**
are you trying to change?

Which **outcomes** are
you hoping to improve?

Describe your initiatives



Which ***strategies***?

Info dissemination
Education
Community-based
Process
Environment
Alternatives

Which ***contributing factors***?

Healthy Beliefs & Standards
Academic Commitment
Parental Support
FSC Involvement
Low Adverse Childhood
Experiences
Social Modeling
Internal Assets
External Assets
Social Norms
Strong Bonds to FSC
Transition to Adulthood
Resiliency

Which ***outcomes***?

Substance Abuse
Alcohol
Tobacco
marijuana
Violence
Mental Health
depression
suicide



Changing the Way we do Business:

Within *and* Across Coalitions

Defining and Documenting Contribution

Single-issue coalitions are learning to define and document their contribution by:

- Doing a problem analysis
- Developing a logic model
- Deciding on specific interventions
- Documenting implementation
- Analyzing their contribution

Example: Metro City Safe Streets

Partners

- Mayor's Office
- Juvenile/Family Courts
- Police Department
- Interfaith Coalition
- Metro United Way
- Metro Schools
- Metro PTA
- Neighborhood Councils
- Tenants Association
- Realtors Association
- Chamber of Commerce
- YouthNet Works
- Seniors Together

Neighborhood Level Indicators

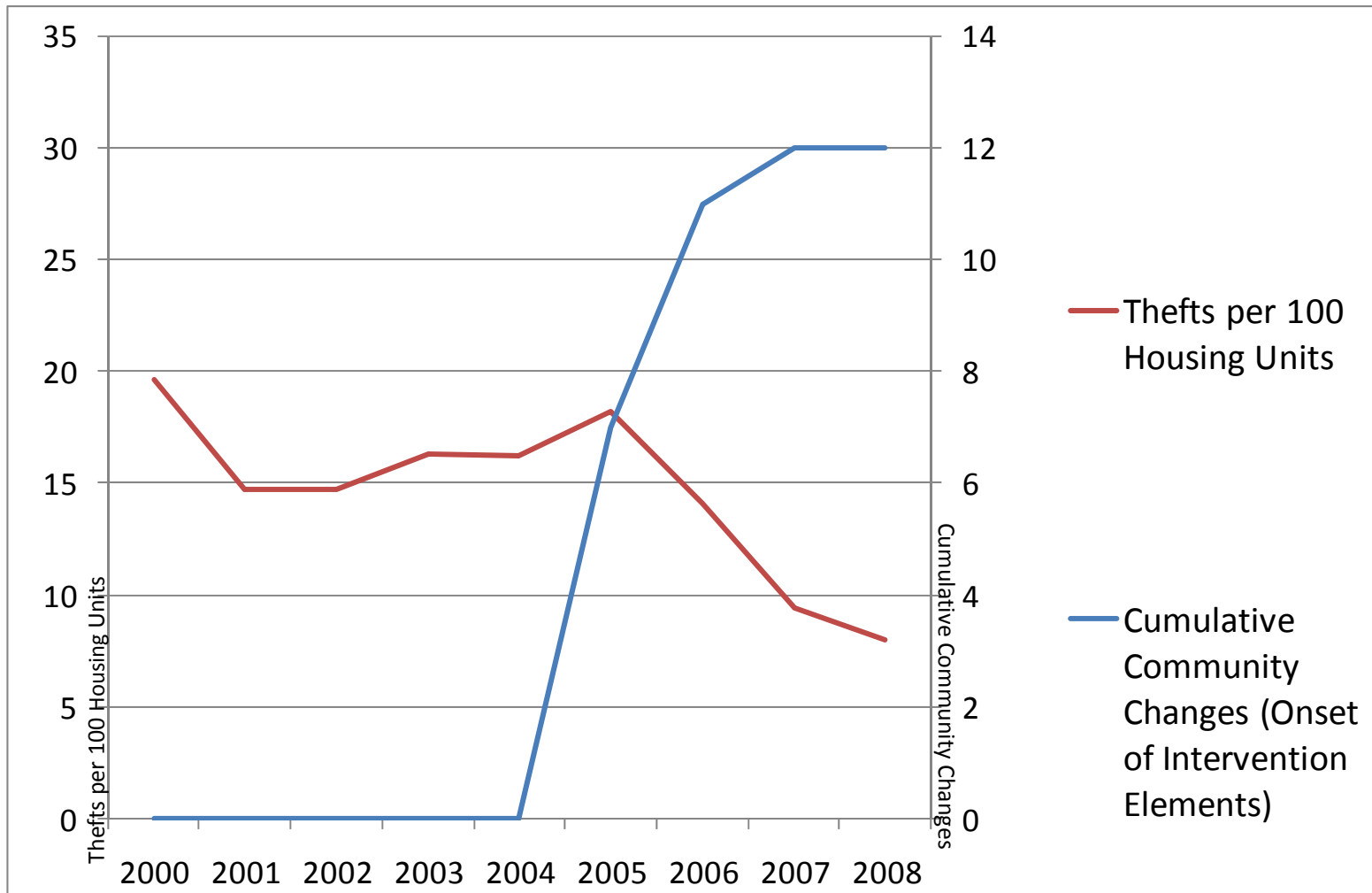
- # thefts per 100 housing units
- # arrests per 1000 residents
- # arrests per 1000 youth <24
- # gang related incidents per month

Interventions

- Adequate lighting
- Reclaimed vacant lots
- Landlord Controls
- Liquor zoning restrictions
- Community policing
- Active Tip lines
- Neighborhood Patrols
- Afterschool/Teen Clubs
- Youth Jobs Program
- Community Rec. Centers
- Senior Escort Service
- School Safety Zones
- Mentoring
- Drug Courts

Metro City Safe Streets

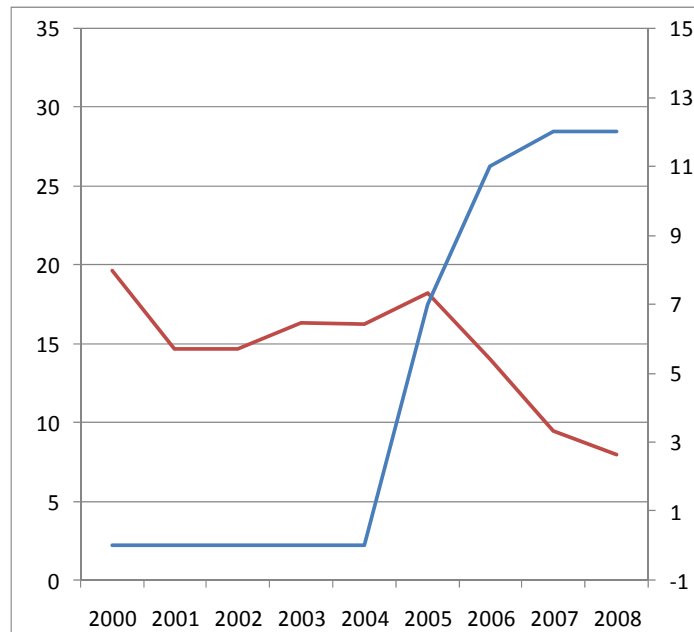
Contribution to Reduced Crime: Neighborhood A



Contributions Consistent Across Neighborhoods

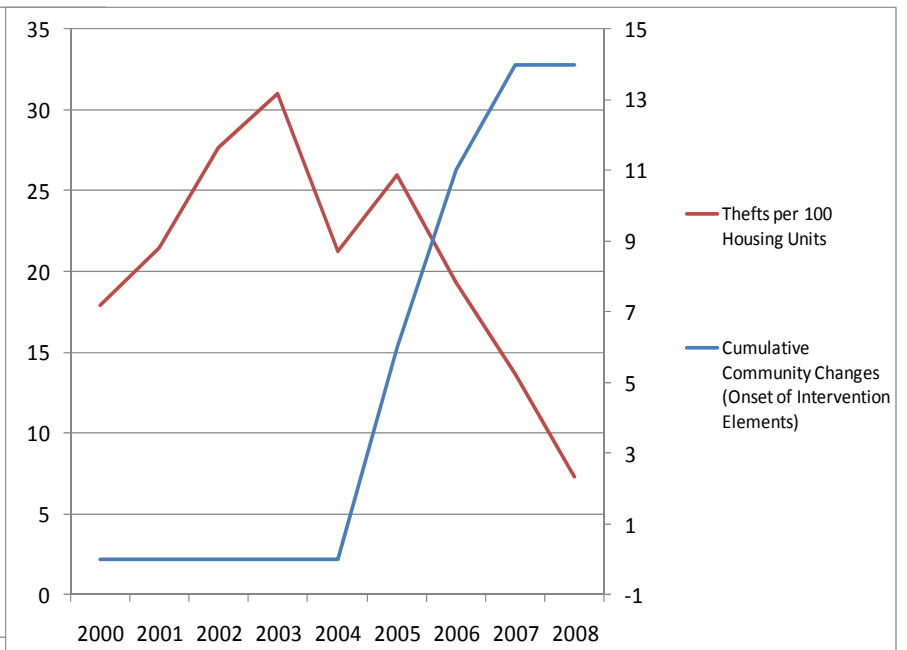
Safe Streets

Neighborhood A



Safe Streets

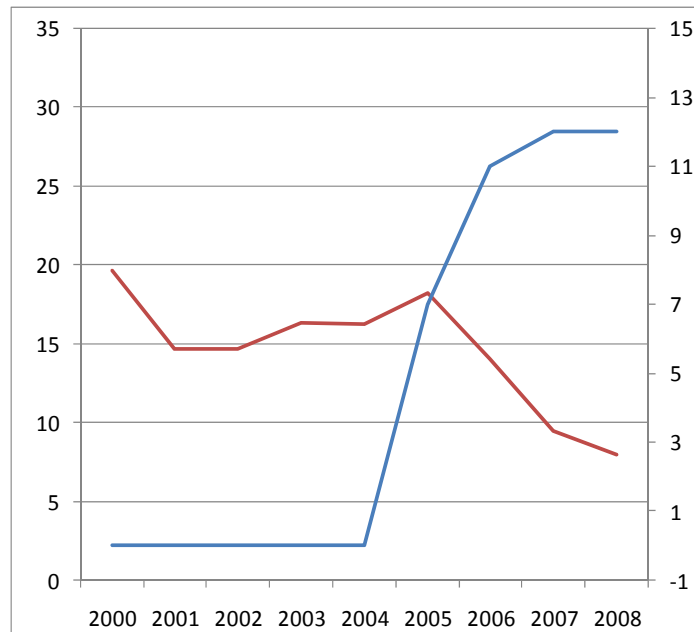
Neighborhood B



Contributions Consistent Across Neighborhoods

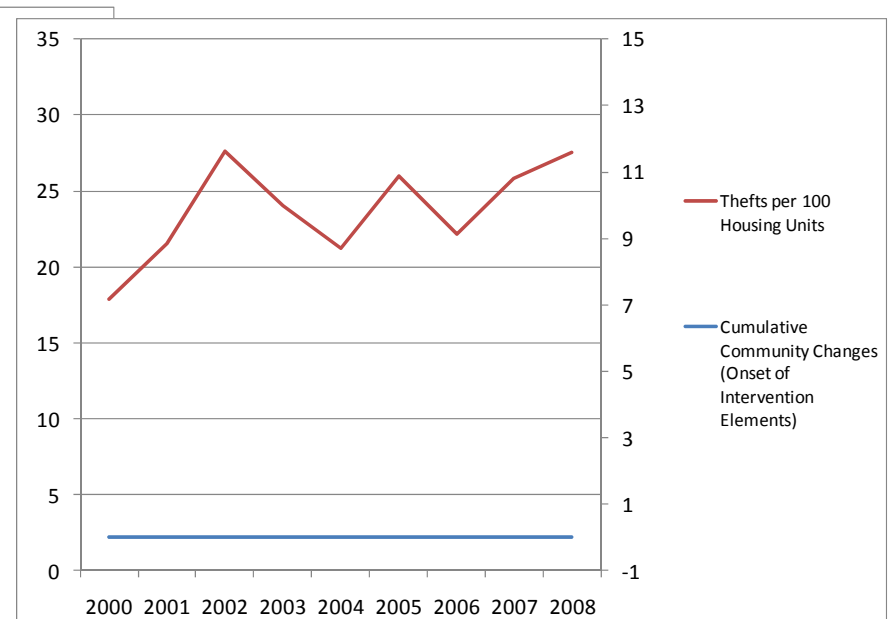
Safe Streets

Neighborhood A

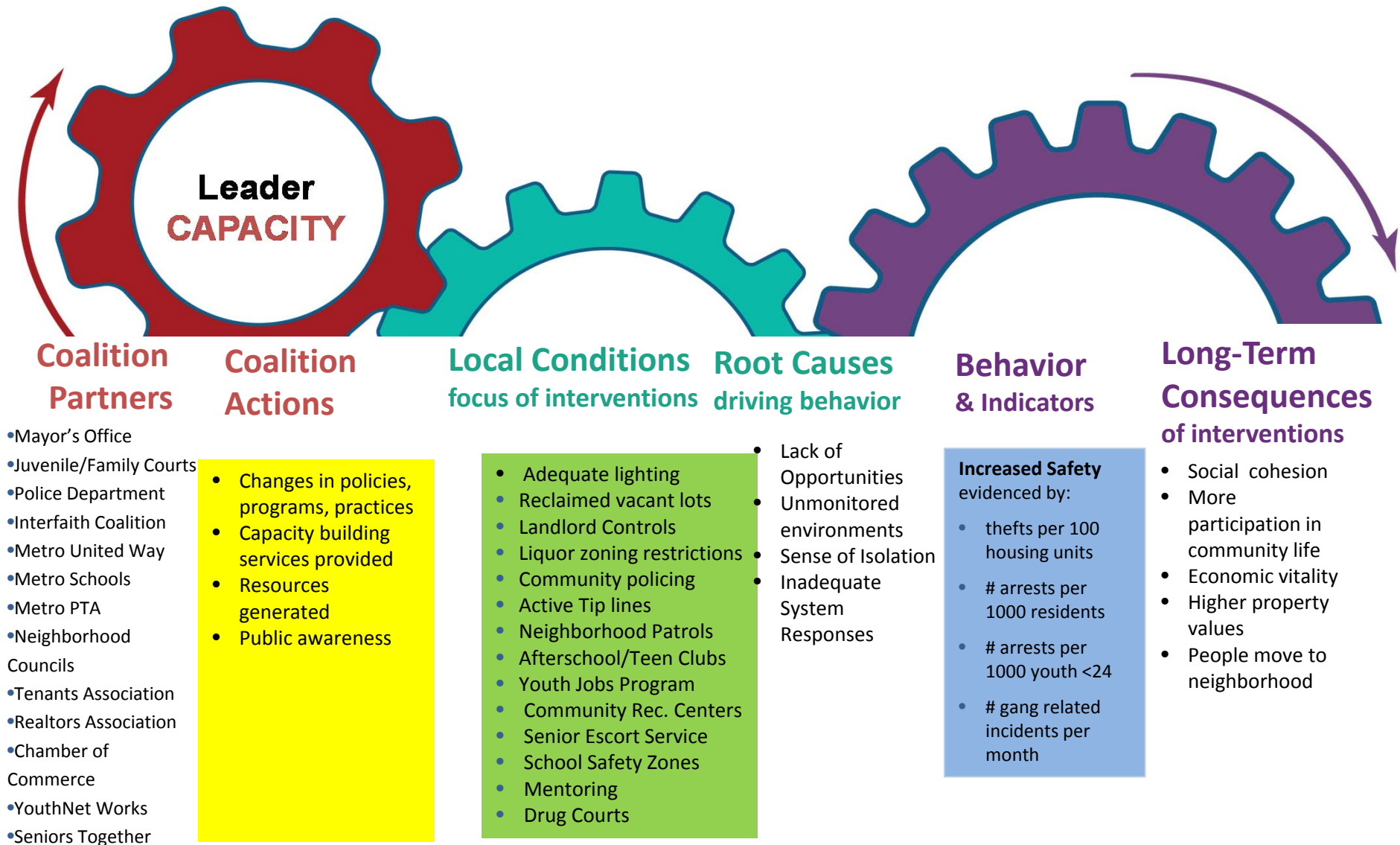


No Intervention

Neighborhood G



Linking Effort to Outcomes: Safe Streets Example



How are you using logic models?

Working with data?

What did success lead to?

- **Community Confidence Boosted?**

Yes. By setting clear goals and documenting its contribution in selected neighborhoods, Metro Safe Streets Coalition was able to garner support for adding additional neighborhoods.

- **Community Evaluation Model Introduced?**

Yes. Other Coalitions signed up to use this planning and evaluation approach.

- **Community Leaders Aligned?**

No. There was no incentive or opportunity to look for overlap in partners, indicators, and strategies.

Leadership Groups

Neighborhood Councils

Youth Network

Workforce Investment Board

P-20 Council

College Access Network

Substance Abuse Coalition

Mayor's Office on Children, Youth, Families

Afterschool Alliance

Health and Wellness Coalition

Family, School & Community Supports

Increase after-school participation

Improve OST program quality

Expand learning opportunities

FRAGMENTED LEADERSHIP

Increase child health coverage

Reduce child welfare caseloads

Expand early childhood education

Child and Youth Outcomes

Increase School Readiness

Reduce Youth Violence

Improve Third Grade Reading

Reduce Abuse & Neglect

Reduce Obesity

Reduce Bullying

Increase On-Time Graduation

Improve Job Skills

Increase Civic Engagement

Reduce Substance Use

Decrease Youth Idleness

Example: Partner Comparison

Metro City Safe Streets

- Mayor's Office
- Juvenile/Family Courts
- Police Department
- Interfaith Coalition
- Metro United Way
- Metro Schools
- Metro PTA
- Neighborhood Councils
- Tenants Association
- Realtors Association
- Chamber of Commerce
- YouthNetWorks
- Seniors Together

Metro Teen Pregnancy Coalition

- Mayor's Office
- Juvenile/Family Courts
- Public Health Department
- Interfaith Coalition
- Metro United Way
- Metro Schools
- Metro PTA
- Neighborhood Councils
- University Hospital & Pediatricians
- Child Care Association
- Chamber of Commerce
- YouthNetWorks
- Planned Parenthood

Example: Intervention Comparison

Metro City Safe Streets

- Adequate lighting
- Reclaimed vacant lots
- Landlord Controls
- Liquor zoning restrictions
- Community policing
- Active Tip lines
- Neighborhood Patrols
- Afterschool/Teen Clubs
- Youth Jobs Program
- Community Rec. Centers
- Senior Escort Service
- School Safety Zones
- Mentoring
- Drug Courts

Metro Teen Pregnancy Coalition

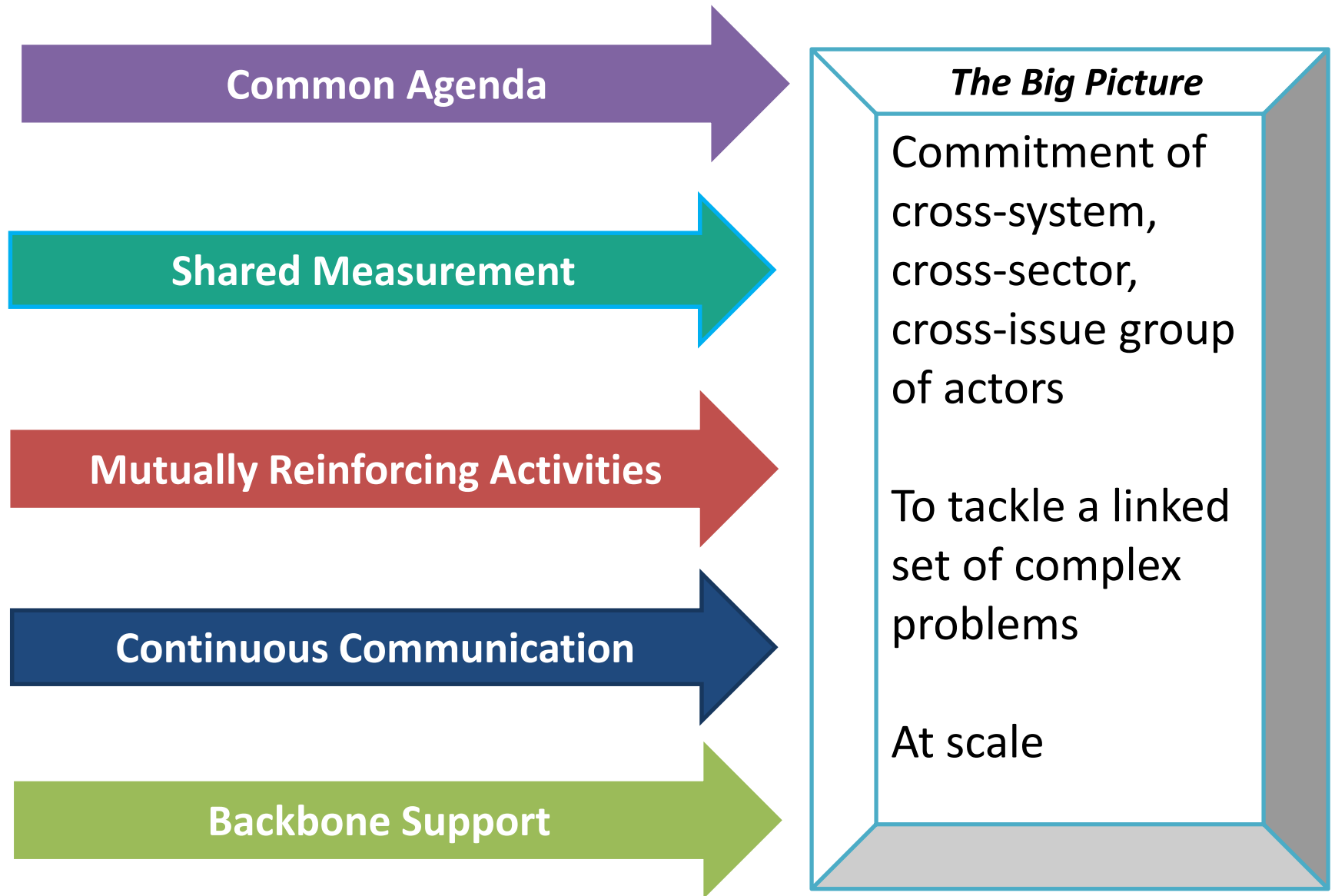
- Sexuality Education (home, school, faith)
- School Based Clinics
- Neighborhood Clinics
- School week curfews
- Peer to Peer Counseling
- 211 and Teen Hot Lines
- College and Career Awareness
- *Afterschool/Teen Clubs*
- *Youth Jobs Program*
- *Community Rec. Centers*
- Service Learning/Youth Engagement
- *School Safety Zones*
- *Mentoring*
- Family counseling



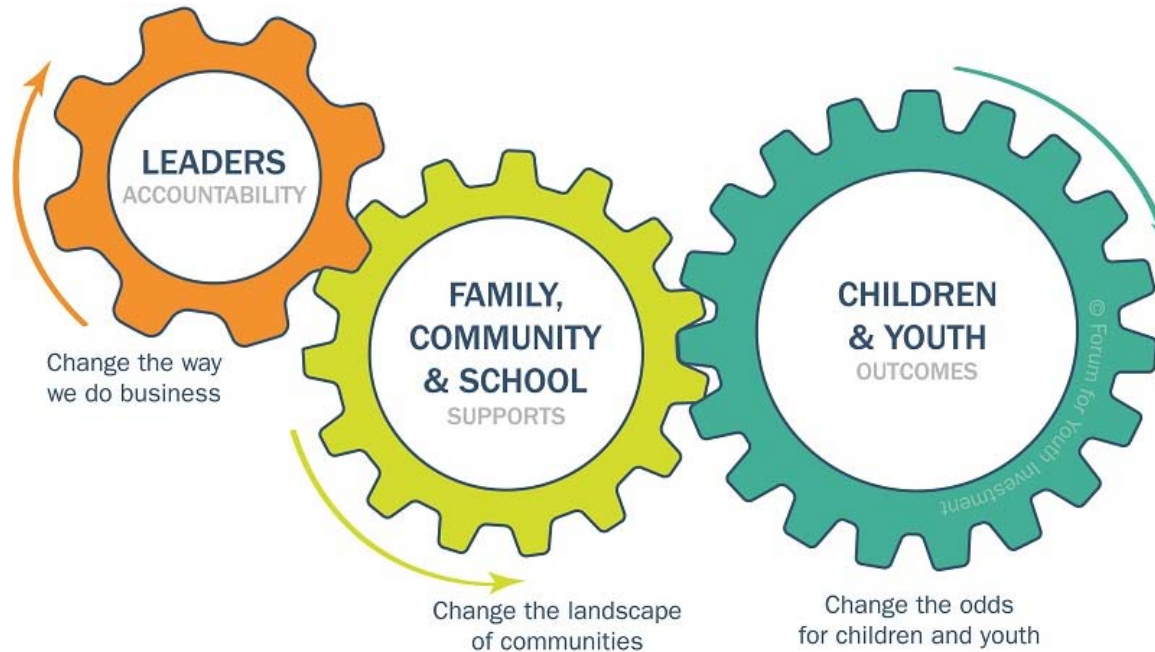
$$C = D \times V \times P$$

Change = Dissatisfaction x Vision x Plan

Five Conditions for Collective Impact



The Three Gear Question Path



Who have we engaged? (coalitions? providers? youth? the broader community?)

Where are our efforts focused? (specific geographies, age groups, issues?)

How well are we managing the community change process? Taking actions that:

- Align with our goals?
- Implement a powerful set of strategies?
- Address priority populations & communities?

Who supports our youth? (schools? CBOs? Families? faith community? Employers?)

Where are the supports located?

How well are these supports being provided?

- How accessible?
- How coordinated?
- How well-used?
- What is the quality of these supports?

Who are the youth in our community? (what descriptors? age? family status? special needs?)

Where do these young people and their families live, learn, work?

How well are the youth in our community doing:

- Academically & Vocationally?
- Emotionally & Physically?
- Socially & Civically?

A Big Picture Approach to Action Planning & Community Change

OVERVIEW



How many are really “*ready*”? It’s up to you.



THANK YOU!

www.Readyby21.org

www.Forumfyi.org

www.CYPQ.org

www.Communitysystemsgroup.com

